

# TIME

## A UNITS OF TIME

### A.1 CHOOSING THE RIGHT UNITS OF TIME

**MCQ 1:** Which unit would you use to measure the time it takes to run 100 meters?

Check one answer:

- ☐ Seconds
- ☐ Minutes
- ☐ Hours
- ☐ Days
- ☐ Weeks
- ☐ Months
- ☐ Years

**MCQ 2:** Which unit would you use to measure the time it takes to clean up your bedroom?

Check one answer:

- ☐ Seconds
- ☐ Minutes
- ☐ Hours
- ☐ Days
- ☐ Weeks
- ☐ Months
- ☐ Years

**MCQ 3:** Which unit would you use to measure your age?

Check one answer:

- ☐ Seconds
- ☐ Minutes
- ☐ Hours
- ☐ Days
- ☐ Weeks
- ☐ Months
- ☐ Years

**MCQ 4:** Which unit would you use to measure the time it takes to watch a movie?

Check one answer:

- ☐ Seconds
- ☐ Minutes
- ☐ Hours
- ☐ Days

**MCQ 5:** Which unit would you use to measure the time it takes to go on a family camping trip?

Check one answer:

- ☐ Seconds
- ☐ Minutes
- ☐ Hours
- ☐ Days

## B CONVERTING UNITS OF TIME

### B.1 CONVERTING UNITS OF TIME FROM BIGGER TO SMALLER



**Ex 6:** Convert 2 hours to minutes:

$$2 \text{ h} = \boxed{\phantom{00}} \text{ min}$$



**Ex 7:** Convert 3 days to hours:

$$3 \text{ d} = \boxed{\phantom{00}} \text{ h}$$



**Ex 8:** Convert 5 minutes to seconds:

$$5 \text{ min} = \boxed{\phantom{00}} \text{ s}$$



**Ex 9:** Convert 2 weeks to days:

$$2 \text{ wk} = \boxed{\phantom{00}} \text{ d}$$

### B.2 CONVERTING UNITS OF TIME FROM SMALLER TO BIGGER



**Ex 10:** Convert 120 seconds to minutes:

$$120 \text{ s} = \boxed{\phantom{00}} \text{ min}$$



**Ex 11:** Convert 24 hours to days:

$$24 \text{ h} = \boxed{\phantom{00}} \text{ d}$$



**Ex 12:** Convert 180 minutes to hours:

$$180 \text{ min} = \boxed{\phantom{00}} \text{ h}$$



**Ex 13:** Convert 14 days to weeks:

$$14 \text{ d} = \boxed{\phantom{00}} \text{ wk}$$

### B.3 DIVIDING TIME

**Ex 14:** If you divide an hour into two equal parts, how many minutes are in half an hour?

Half an hour =  minutes

**Ex 15:** If you divide an hour into four equal parts, how many minutes are in one quarter of an hour?

One quarter of an hour =  minutes

**Ex 16:** If you divide a day into two equal parts, how many hours are in half a day?

Half a day =  hours

### C 24-HOUR TIME FORMAT

#### C.1 TELLING TIME THE 24-HOUR WAY

**Ex 17:** Your favorite show starts at 6:15 PM. What time is it in 24-hour time?

:

**Ex 18:** You wake up at 7:45 AM for school. What time is it in 24-hour time?

:

**Ex 19:** Your soccer game starts at 4:30 PM. What time is it in 24-hour time?

:

**Ex 20:** You eat dinner at 7:00 PM. What time is it in 24-hour time?

:

#### C.2 FINDING EVERYDAY TIME FROM 24-HOUR CLOCKS

**Ex 21:** You have breakfast at 07:30. What time is it?

:  ☐ PM  
☐ AM

**Ex 22:** Your art class starts at 14:45. What time is it?

:  ☐ AM  
☐ PM

**Ex 23:** You go to bed at 20:00. What time is it?

:  ☐ AM  
☐ PM

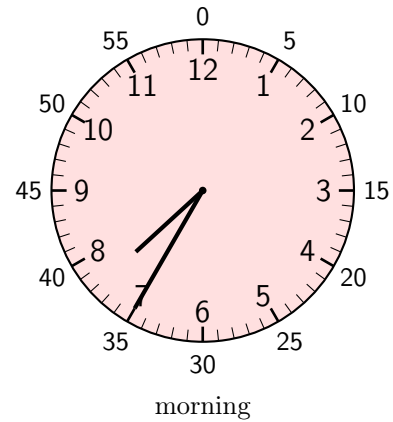
**Ex 24:** Your music lesson starts at 15:20. What time is it?

:  ☐ AM  
☐ PM

### D READING CLOCK

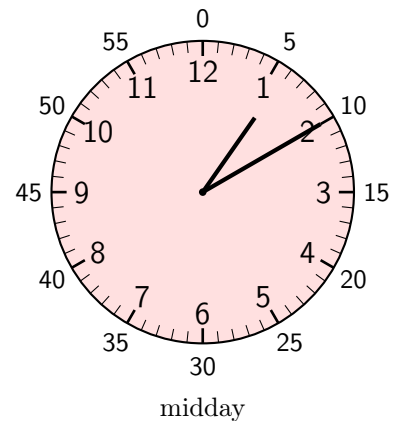
#### D.1 READING CLOCK

**Ex 25:** You leave for school at the time shown on this clock. What time is it?



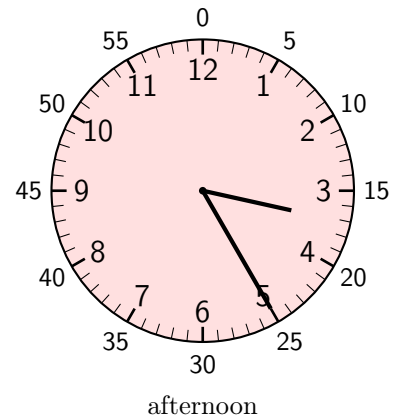
:  ☐ PM  
☐ AM

**Ex 26:** You eat lunch at the time shown on this clock. What time is it?



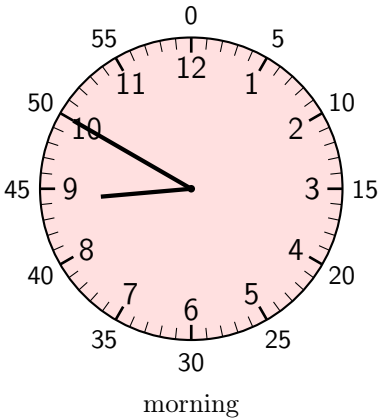
:  ☐ AM  
☐ PM

**Ex 27:** Your playtime starts at the time shown on this clock. What time is it?



:  ☐ AM  
☐ PM

**Ex 28:** You read a book at the time shown on this clock. What time is it?

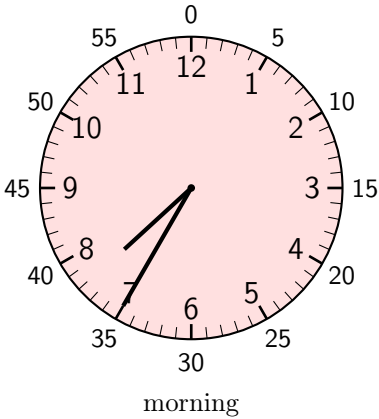


:

☐ PM  
☐ AM

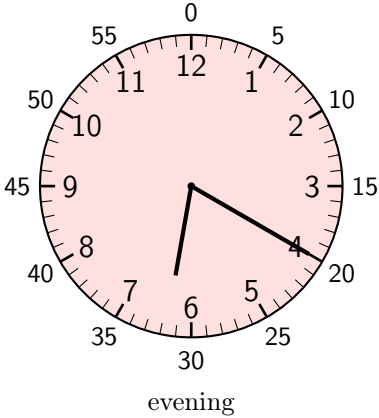
**D.2 READING CLOCK FOR 24-HOUR TIME**

**Ex 29:** You leave for school at the time shown on this clock. What time is it in 24-hour format?



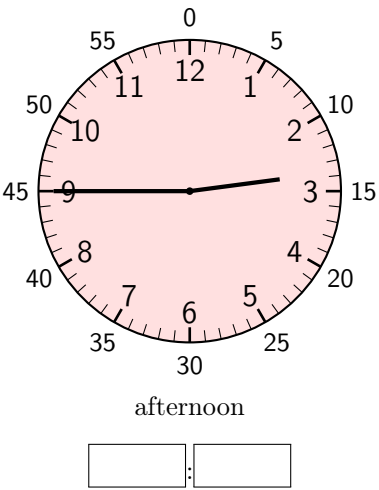
:

**Ex 30:** You eat dinner at the time shown on this clock. What time is it in 24-hour format?



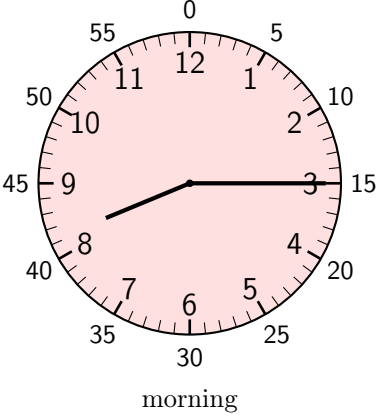
:

**Ex 31:** Your art class starts at the time shown on this clock. What time is it in 24-hour format?



:

**Ex 32:** You have breakfast at the time shown on this clock. What time is it in 24-hour format?



:

