

# LENGTH

## A STANDARD UNITS OF LENGTH

### A.1 CHOOSING LENGTH UNITS

**MCQ 1:** Which unit will be used to measure how long a pencil is?

**Choose 1 answer:**

- ☐ Centimeters
- ☐ Meters
- ☐ Kilometers

**MCQ 2:** Which unit will be used to measure the distance between two cities?

**Choose 1 answer:**

- ☐ Millimeters
- ☐ Centimeters
- ☐ Meters
- ☐ Kilometers

**MCQ 3:** Which unit will be used to measure how tall a tree is?

**Choose 1 answer:**

- ☐ Millimeters
- ☐ Centimeters
- ☐ Meters
- ☐ Kilometers

**MCQ 4:** Which unit will be used to measure the length of an ant?

**Choose 1 answer:**

- ☐ Millimeters
- ☐ Centimeters
- ☐ Meters
- ☐ Kilometers

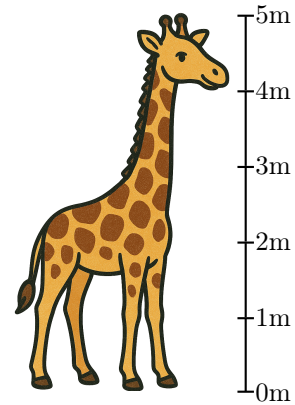
**MCQ 5:** Which unit will be used to measure how long a book is?

**Choose 1 answer:**

- ☐ Millimeters
- ☐ Centimeters
- ☐ Meters
- ☐ Kilometers

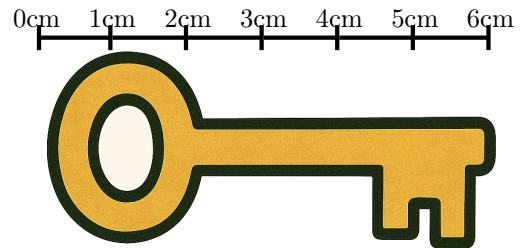
### A.2 MEASURING

**Ex 6:**



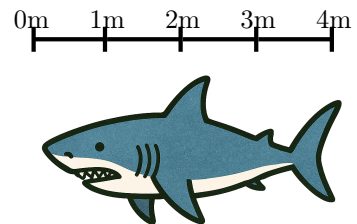
The giraffe measures  ☐ centimeters tall.  
☐ meters

**Ex 7:**



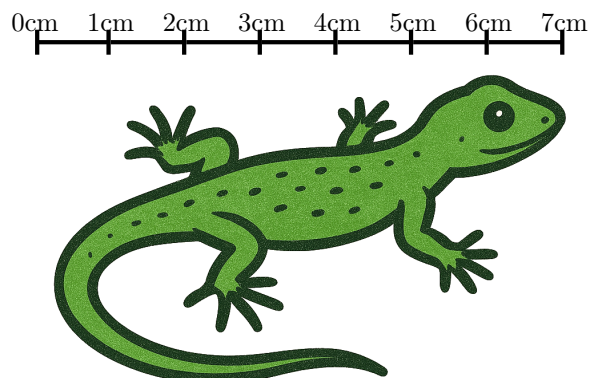
The key measures  ☐ centimeters long.  
☐ meters

**Ex 8:**



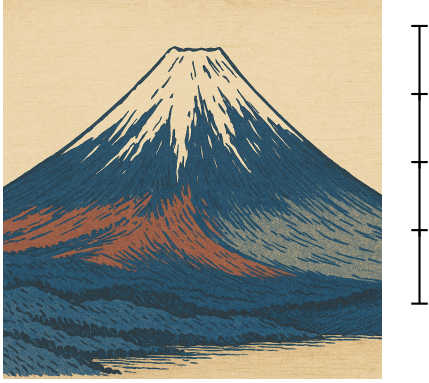
The shark measures  ☐ centimeters long.  
☐ meters

**Ex 9:**



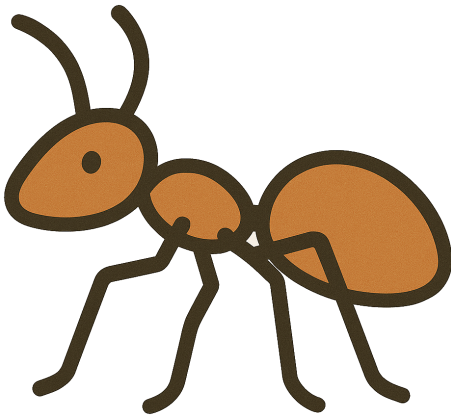
The lizard measures  ☐ centimeters ☐ meters long.

Ex 10:



Mount Fuji measures  ☐ meters ☐ kilometers tall.

Ex 11:



The ant measures  ☐ millimeters ☐ centimeters long.

## B CONVERSION OF LENGTH UNITS

### B.1 CONVERTING UNITS OF LENGTH

Ex 12: Convert:

$$2 \text{ km} = \text{ } \text{m.}$$

Ex 13: Convert:

$$4 \text{ m} = \text{ } \text{cm.}$$

Ex 14: Convert:

$$300 \text{ cm} = \text{ } \text{m.}$$

Ex 15: Convert:

$$4\,000 \text{ m} = \text{ } \text{km.}$$

Ex 16: Convert:

$$23 \text{ cm} = \text{ } \text{mm.}$$

Ex 17: Convert:

$$6\,000 \text{ mm} = \text{ } \text{m.}$$

### B.2 CONVERTING UNITS OF LENGTH WITH DECIMAL NUMBERS

Ex 18: Convert:

$$2.3 \text{ km} = \text{ } \text{m.}$$

Ex 19: Convert:

$$1.60 \text{ m} = \text{ } \text{cm.}$$

Ex 20: Convert:

$$22.5 \text{ cm} = \text{ } \text{mm.}$$

Ex 21: Convert:

$$185 \text{ cm} = \text{ } \text{m.}$$

Ex 22: Convert:

$$2\,300 \text{ m} = \text{ } \text{km.}$$

Ex 23: Convert:

$$42.2 \text{ km} = \text{ } \text{m.}$$

### B.3 SOLVING PROBLEMS WITH UNIT CONVERSIONS

**MCQ 24:** Hugo and Louis go walking. Louis walks 5 000 meters, and Hugo walks 4.2 kilometers. Who did the longest walk?

- ☐ Louis  
☐ Hugo

**MCQ 25:** A giraffe is 5.1 meters tall, and a horse is 200 centimeters tall. Which animal is taller?

- ☐ Giraffe  
☐ Horse

**MCQ 26:** A snake is 3.8 meters long, and a crocodile is 400 centimeters long. Which animal is longer?

- ☐ Snake  
☐ Crocodile

**MCQ 27:** Emma walks 2.7 km to school, and Liam walks 3 000 meters to school. Who walks farther?

- ☐ Emma  
☐ Liam