

FUNCTIONS

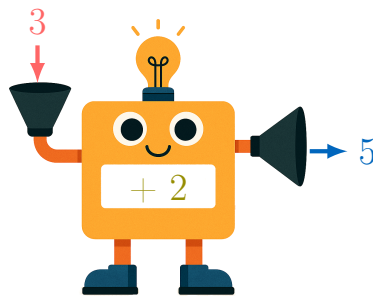
A DEFINITION

Definition **Function**

A **function** is a rule that assigns to each input exactly one output. You can think of a function as a machine: for every input you give it, the machine produces an output according to a specific rule.

Ex:

- The rule is: **add 2**.
- The input is: **3**.
- The output is: $3+2=5$.

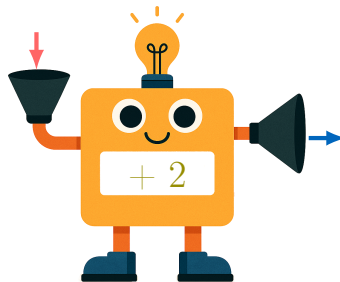


B TABLE OF VALUES

Definition **Table of values**

A **table of values** is a table that shows several pairs of input and output values for a function.

Ex:



Here is a table of values for the rule "add 2":

Input	2	3	4
Output	4	5	6