

# FUNCTIONS

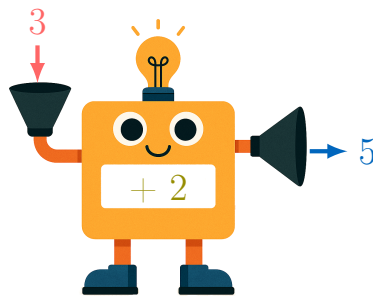
## A DEFINITION

### Definition **Function**

A **function** is a rule that assigns to each input exactly one output. You can think of a function as a machine: for every input you give it, the machine produces an output according to a specific rule.

Ex:

- The rule is: **add 2**.
- The input is: **3**.
- The output is:  $3+2=5$ .

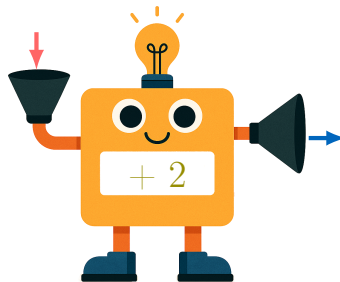


## B TABLE OF VALUES

### Definition **Table of values**

A **table of values** is a table that shows several pairs of input and output values for a function.

Ex:



Here is a table of values for the rule "add 2":

<b>Input</b>	<b>2</b>	<b>3</b>	<b>4</b>
<b>Output</b>	<b>4</b>	<b>5</b>	<b>6</b>